

The background of the entire page is a collage of various birth control pills. The pills are in different colors including purple, green, blue, orange, red, pink, yellow, and grey. Each pill has a distinct shape and markings, including the days of the week (SUN, MON, TUE, WED, THU, FRI, SAT) and some have a small 'P' or other logo. They are arranged in a grid-like pattern, with some overlapping.

GETTING TO KNOW PLANNED PARENTHOOD

2013 – 2014 ANNUAL REPORT

GET TO KNOW PLANNED PARENTHOOD
WHERE YOUR VOICE GETS STRONGER
BY THE NUMBERS



Planned Parenthood of Southern New England

ON THE INSIDE

03

GETTING TO KNOW PLANNED PARENTHOOD

- 03. From Our President and Our Board Chair
- 04. Planned Parenthood is Forward-Thinking, Imaginative, Open-Minded

06

GETTING TO KNOW WHO WE SERVE

- 06. Planned Parenthood is Bold, Fearless, Driven
- 08. Planned Parenthood is Thoughtful, Caring

11

FINANCIALS

- 11. Planned Parenthood is Responsible, Accountable, Smart

12

BOLD & NEW

- 12. Planned Parenthood is Brave, Innovative

14

MEET OUR DONORS

- 14. 2013 - 2014 Financial Report

23

LEADERSHIP

- 23. Planned Parenthood is People, Just Like You

GETTING TO KNOW PLANNED PARENTHOOD

A MESSAGE FROM OUR PRESIDENT AND OUR BOARD CHAIR

We have accomplished so much together and this report is filled with examples of the incredible work that you have helped make possible over the past year. We hope that you will enjoy a few moments of reflection about the very real ways that your support of Planned Parenthood of Southern New England is making a difference in the lives of women and families across Connecticut and Rhode Island. Thanks to you, we have been able to take many bold steps this year to advance our mission.

As the Affordable Care Act (ACA) was implemented nationwide last fall, we dedicated ourselves to helping individuals secure health insurance. Our staff reached out to patients by phone, invited them to enrollment events at our health centers, and helped them navigate the complicated application process. We also canvassed neighborhoods door-to-door to spread the word about the ACA. We reached thousands of people through these efforts, educating them not only about the new health care benefits available to them but also about how they could become advocates for their own health and the health of their communities.



Judy Tabar (center) stands with Amelia Renkert-Thomas (right) and Sarah Weddington, Attorney for Roe v. Wade Supreme Court Case at the 2014 Annual Spring Luncheon in Stamford, Conn.

We were thrilled to move two of our health centers to beautiful new locations in Manchester and Enfield, CT, last year. One patient shared upon entering the new Manchester Health Center: "WOW! You guys deserve an amazing place like this for all the hard work you do! I love it!" Because of the generous support of donors like you, we are now able to provide top-quality health care in a beautiful space that is designed specifically to meet the needs of our patients. What's more, the Manchester Health Center was created with flexible design elements that can be replicated across all of our health centers, providing us with opportunities to improve the experience of our patients throughout CT and RI.

We are continuing to engage the next generation of leaders to renew and reshape our movement. In the past year, we significantly expanded our STARS teen peer educator program by adding a group in Bridgeport, CT; and this addition helped grow the number of STARS by 43% from 47 to 67. We also launched our Young Leaders Advisory Council, a new program for youth already engaged with PPSNE that provides an opportunity to further inform our programs from a youth perspective and advise us on issues pertaining to young people. In these ways and many more, we are striving to fulfill our mission every day. Your support is vital to our success.

Because of you, we have an exciting year ahead of us. This year, we were particularly delighted to welcome more than 25 members to our new President's Council—a group of volunteers and donors who give \$25,000 or more to support our work. It takes committed supporters at every level to keep us moving forward and positively impact the communities we serve.

On behalf of everyone at PPSNE, thank you for your dedication to this organization, for your continuous generosity, and for your partnership in our vital work.

A handwritten signature in black ink that reads "Judy Tabar".

Judy Tabar, President and CEO

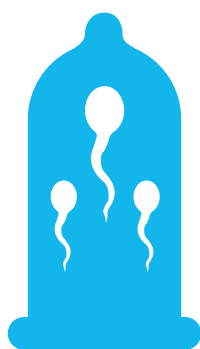
A handwritten signature in black ink that reads "Amelia Renkert-Thomas".

Amelia Renkert-Thomas, Board Chair

EDUCATION & TRAINING

PLANNED PARENTHOOD IS FORWARD-THINKING, IMAGINATIVE, OPEN-MINDED

Your generosity allows our education and training team to continue to provide educational opportunities to youth, professionals, parents and community-based organizations. Our comprehensive sex education and training programs reduce racial and ethnic health disparities in Connecticut and Rhode Island while promoting the importance of knowledge about sexual health.



382 YOUTH REACHED

As part of the Centers for Disease Control Teen Pregnancy Prevention Initiative in the City of Hartford (HTTPI), PPSNE trained 23 youth-serving professionals through an evidence-based curriculum aimed at reducing the rates of HIV, STIs and teen pregnancies. The professionals received 148 hours of training and technical assistance. They came from the following community-based organizations: Family Life Education, Maternal and Infant Outreach Program, Blue Hills Civic Association and Hartford Public Schools – HPHS Academy of Nursing and Health Sciences, HPHS Law and Government Academy, and HPHS Academy of Engineering and Green Technology. Through the curriculum, the trainees reached 382 youth.

HEALTHY RELATIONSHIPS



PPSNE continues to work with the CT Department of Developmental Services (DDS) to provide education on healthy relationships to individuals with intellectual disabilities. PPSNE provided training on healthy relationships for staff at DDS. This training was designed to inform and engage DDS staff to support the relationship programming in the upcoming year.

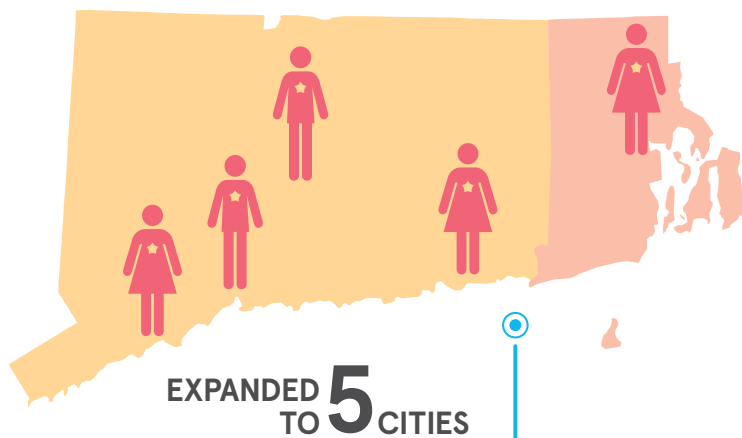
6,881 EDUCATED INDIVIDUALS

Last year, 6,881 individuals participated in a PPSNE education session. Of those, 2,544 attended a multi-session program.



714 PROFESSIONALS IN ATTENDANCE

PPSNE facilitated 47 professional development trainings on reproductive health and human sexuality and evidence-based programs. In total, 715 youth-serving professionals attended the trainings.



For the 2013 academic school year beginning last September, PPSNE expanded its Students Teaching About Responsible Sexuality (STARS) program to five different locations, for a total of 67 peer educators across RI and CT. STARS engages a group of highly trained teen peer educators to educate their friends and classmates about healthy sexuality. We now have STARS programs in Bridgeport, Hartford, New Haven, New London and Providence.

OVER 125 PARTICIPANTS



On May 31, 2013, PPSNE, joined 14 community partners to host a one-day conference in RI, entitled “Got UR Game On? Sex. Youth. Culture.” Conference workshop topics included Perceptions of Teen Pregnancy Among Latinos, Developing Assets and Promoting Education to Meet the Needs of Pregnant & Parenting Teens, and Queer Identities and Gender Non-Conformity. More than 125 people attended the conference. Community partners included AIDS Project Rhode Island, AIDS Care Ocean State, Bradley/ Hasbro Children’s Research Center, Brown University AIDS Project, John Snow Inc., the Rhode Island Departments of Education and Health, Sojourner House, and Youth Pride, Inc.

FIRST EVER ALL STARS EVENT



We held our first ever “ALL STARS” event in December 2013. More than 60 STARS from Bridgeport, Hartford, New Haven, New London and Providence gathered for a day-long event in Hartford, focusing on World AIDS Day, which is recognized annually on December 1. During the day-long event, STARS worked in small groups to create one-minute PSAs on HIV/AIDS prevention and testing.

In November, Teen Clinic expanded to our New London Health Center. This brings the number of Teen Clinic locations to four: New London, New Haven, Hartford and Bridgeport. At the monthly Teen Clinic program, teens can receive free preventive care and sexuality education in a teens-only environment. Overall, there were 110 health center visits. Our teen peer educators (STARS) planned and coordinated the program in partnership with health center staff.

TEENS ONLY





ADVOCACY

PLANNED PARENTHOOD IS BOLD, FEARLESS, DRIVEN

Because of champions like you, our public policy and advocacy team can confidently fight to ensure every individual knows their health care rights and has access to the services, education and information to help them realize those rights.

THE AFFORDABLE CARE ACT

Along with Planned Parenthood, the Affordable Care Act (ACA) had a major impact on the lives of millions of Americans beginning in 2013. PPSNE partnered closely with Access Health CT, Connecticut's state exchange. We kicked-off our education and outreach efforts by educating the public at community events such as town parades, concerts and rallies as well as holding educational events in our health centers and communities.

With significant funding from both Planned Parenthood Federation of America (PPFA) and the Connecticut Health

Foundation, PPSNE hired two ACA Enrollment Specialists who reached out to PPSNE patients by phone, invited them to enrollment events at our health centers, and helped them navigate the complicated web-based application process.

Members of the public policy and advocacy team also became "certified application counselors" and canvassed neighborhoods door-to-door, in order to spread the word about the ACA.

20 EVENTS
IN 2 MONTHS

Sponsored 20 PPSNE health center enrollment events in two months—of 90 attendees, 59 enrolled in coverage.

5 COMMUNITY
EVENTS

Attended five community events (sponsored by others). Staff assisted in enrolling 84 attendees, and 52 enrolled.

1,015
CONVERSATIONS

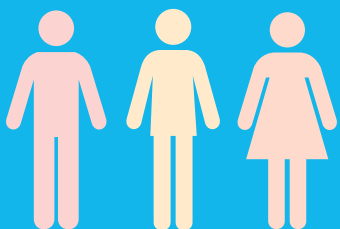
Conducted patient-focused outreach and education, including more than 3,700 phone calls, which led to 1,015 conversations.

38 NEW
ADVOCATES

Organized campus outreach efforts, which included 75 conversations, identifying 38 new advocates.

115
WAITING ROOM
CONVERSATIONS

Held 115 conversations in waiting rooms, during which our Health Center Advocacy volunteers identified 90 new advocates.



Our RI-based Young Professionals group hosted six events last year to build awareness of the ACA: "Sex Trivia on Tap," "How to Have 'the Talk' with Your

Legislator" (lobby training), two "Sex, Politics & Cocktails" hours, and a "Toast to Reproductive Justice." In total, we had 177 individuals attend the events.



The 2013 legislative sessions concluded in both states with the following results:

In CT, PPSNE worked in several coalitions to help pass bills that would limit gun violence, provide justice for disabled victims of rape, establish a task force to study a state family and medical leave insurance program, and protect nearly 37,000 low-income HUSKY parents in danger of losing health coverage. We also prevented a last-minute amendment threat to require parental notice prior to abortion.

In RI, the General Assembly went beyond its session deadline, and under suspended rules, passed a bill for

a “choose life” license plate with the proceeds going to fund a local anti-choice crisis pregnancy center. However, Governor Chafee vetoed that bill later in July. The RI Senate also passed a bill requiring that three insurance plans in the RI exchange not cover abortion, and that enrollees in those plans would have the “mandatory abortion fee” (a negligible amount) refunded. Fortunately, this bill was not raised for a vote in the House. An enormous amount of time and effort was spent by our staff and contract lobbyists on these legislative battles—especially those fought in RI. Regardless of the outcomes, we have seen an inspiring and passionate response from our supporters.

A major focus of our work this year has been to introduce advocacy opportunities for patients in the waiting areas of PPSNE health centers. The Health Center Advocacy Program (HCAP) has engaged 15 volunteers/interns who primarily promote the ACA, collecting nearly 700 supporter signatures during more than 800 conversations in our waiting rooms across both states.

Our RI HCAP project has resulted in the collection of more than 400 “Obamacare Works” cards and 87 “I Stand with Planned

Parenthood” cards from our patients. We collected more than 100 personal stories from our patients that often focused on their experiences receiving health services at Planned Parenthood, as well as their access to health

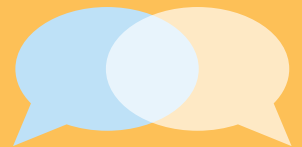
insurance, lack of it, and the importance of gaining coverage.

**I
STAND
WITH
PLANNED
PARENTHOOD®**

Our community engagement efforts are vital in helping us contribute to health equity and improved sexual and reproductive health outcomes among the African-American and Black and Latino/a communities. In the North End of Hartford, Public Policy and Advocacy staff members have reached out to community-based organizations that work on issues that affect local families daily. We helped plan *Mothers United Against Violence’s 6th Annual March Against Gun Violence*—one example of our work with nontraditional coalition partners. Our work in the Latino/a community

has recently been focused on advocacy efforts for the ACA and immigration reform. As a result, community partnerships have doubled in the last eight months.

PPSNE staff members serve on Connecticut’s Immigrant Rights Alliance, work to expand our *promotores* program, train additional community members to be advocates for reproductive justice, and expand our reach and role in the Latino/a Community.



PPSNE is committed to building a robust Rhode Island Coalition for Reproductive Justice (RICFRJ). Public Policy and Advocacy staff members have grown the coalition to include 17 partner organizations and received a generous National Institute for Reproductive Health grant to formalize the group, host trainings and recruit additional partners. The RICFRJ held a strategic retreat in August and promoted a robust proactive legislative package of 14 bills in 2014 to put the anti-abortion agenda on defense. We also created a well-trained, message-disciplined group of faithful voices

and leaders who advocate for our coalition issues. These leaders include five religious leaders who serve on a steering committee, 12 leaders who have signed onto a family planning expansion effort, and 29 leaders who have signed a reproductive justice letter to support this organizing initiative.



HEALTH CARE

PLANNED PARENTHOOD IS THOUGHTFUL, CARING

Your commitment and dedication to Planned Parenthood of Southern New England has paved the way for us to become one of the region's largest providers of family planning and reproductive health care services. Since 1923, you have helped us grow into an organization with 18 health centers in Connecticut and Rhode Island, delivering care to nearly 70,000 patients each year.

» Planned Parenthood of Southern New England (PPSNE) health centers provided 115,594 visits to 68,914 patients in FY14. This included 105,266 GYN visits and 10,586 abortion visits.

» This past winter, we officially launched primary care services at four of our PPSNE centers: New London, Waterbury, Meriden and Providence. Through the end of March and, since that time, we have seen 110 primary care visits at these centers. Visits included work physicals, treatment of upper respiratory infections, seasonal allergies, ear pain, sinus infections, acute bronchitis and sore throats. We continue to explore other services we might add over time.

» Since the inception of the Connecticut Medicaid Family Planning Expansion, PPSNE has completed applications for 9,320 patients. Many of these patients got their services covered because they were eligible for full-benefit or Medicaid. This is exciting news for our work to address racial and ethnic health disparities.



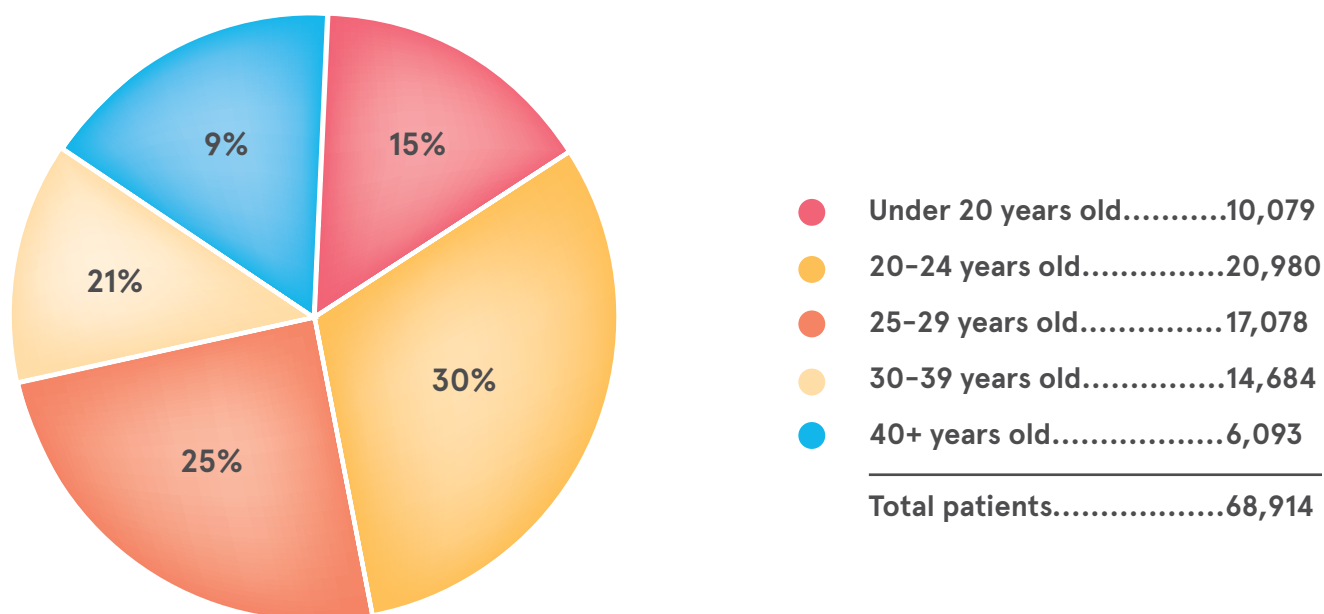
» Since the beginning of the Clinical Research Department three years ago, we have experienced notable growth in our involvement in a number of studies that advance reproductive health care and enhance our mission. Our national reputation as a research leader among Planned Parenthood affiliates continues to bring us new studies and opportunities, and we consistently meet and exceed sponsor expectations for enrollment. We are conducting two studies that will contribute to knowledge about long-term side effects, acceptability, and tolerability of various birth control methods; and we have been chosen for a study following medication abortion that has very important implications for future best practices.



Meriden • New London • Waterbury • Providence

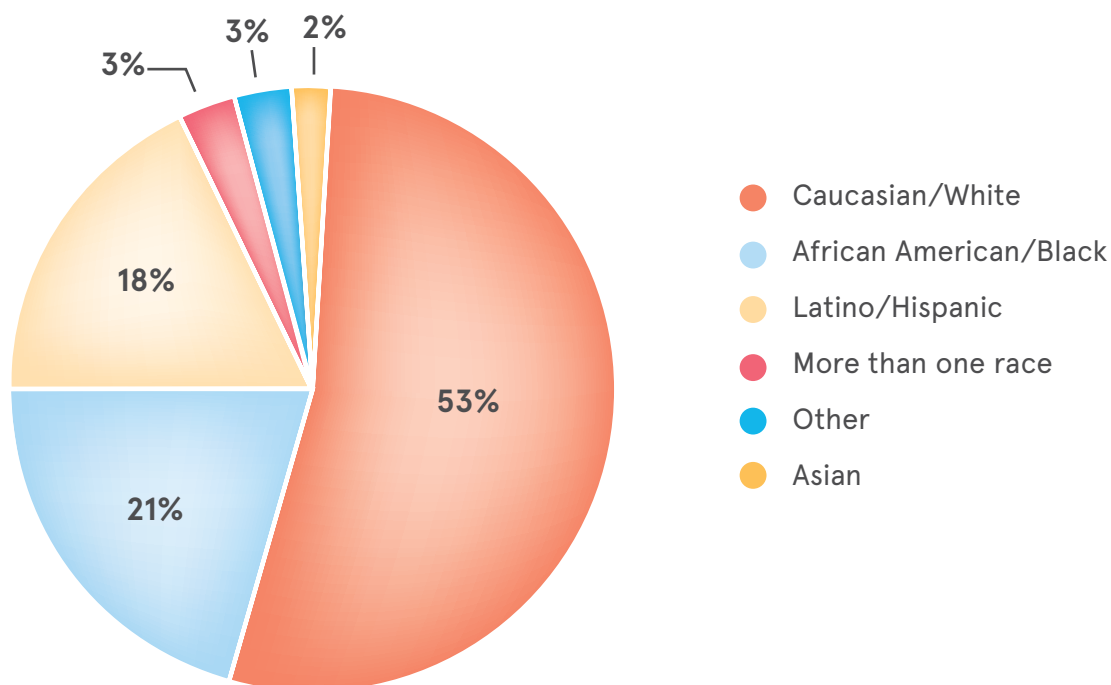
PLANNED PARENTHOOD IS OUR PATIENTS

Your contribution and support allow Planned Parenthood of Southern New England to work every day to meet the critical health care needs of Connecticut and Rhode Island residents. Women, men and teens of all racial, ethnic and socioeconomic backgrounds choose PPSNE as their health care provider for lifesaving cancer screenings, birth control, prevention and treatment of STDs/STIs, breast health services, Pap tests, sexual health education, information and health counseling. Because of you, every person who walks through our health center doors receives the high-quality, confidential care they deserve, regardless of their ability to pay.

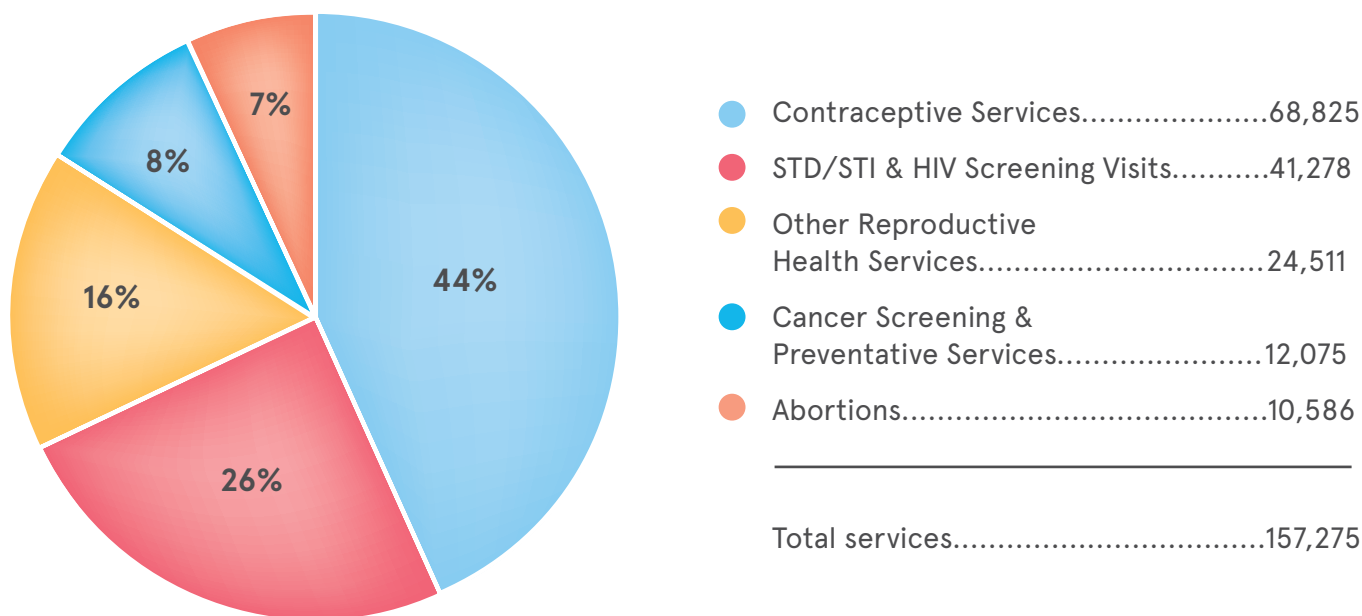


AGE	FEMALE		MALE	
Under 20	9,440	14%	639	9%
20-24	18,461	27%	2,519	33%
25-29	14,876	21%	2,202	28%
30-39	12,933	19%	1,751	21%
40+	5,207	7%	886	10%
TOTALS	60,917	88%	7,997	12%

68,914 Patients
115,594 Visits



PLANNED PARENTHOOD IS OUR MEDICAL SERVICES



Contraceptive Services.....	68,825
STD/STI & HIV Screening Visits.....	41,278
Other Reproductive Health Services.....	24,511
Cancer Screening & Preventative Services.....	12,075
Abortions.....	10,586
<hr/>	
Total services.....	157,275

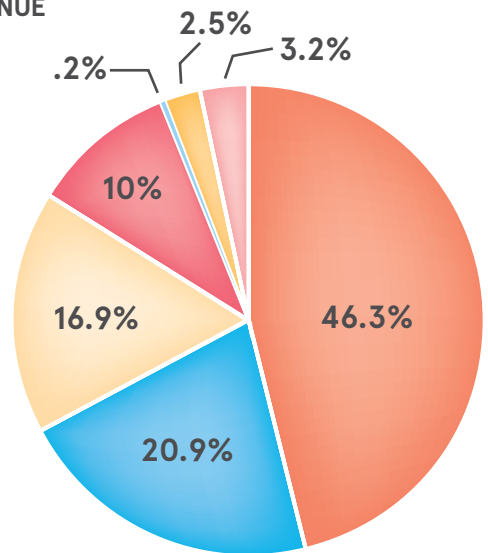
FINANCIALS

PLANNED PARENTHOOD IS RESPONSIBLE, ACCOUNTABLE, SMART

REVENUE

	FY 2014	FY 2013
Third Party Insurers	14,970,394	13,607,708
Contributions	6,755,269	8,733,259
Government Grants	5,444,224	5,805,266
Private Patient Fees	3,218,496	3,550,742
Education	58,795	61,580
Other	821,693	1,303,370
Endowment Investments Net Gain	1,035,561	591,203
Total	\$ 32,304,432	\$33,653,128

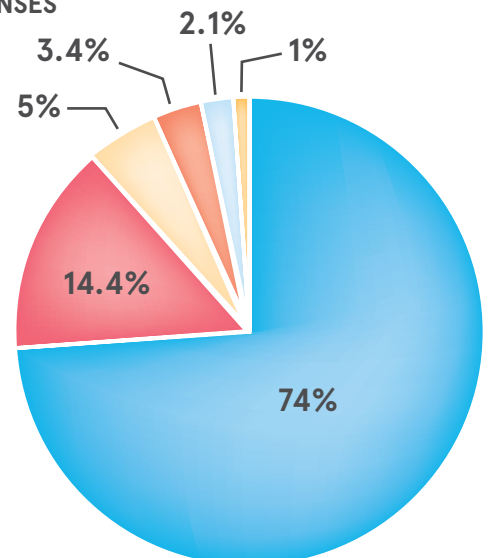
REVENUE



EXPENSES

Medical Services	21,807,084	20,877,899
Administration	4,252,877	3,814,950
Fundraising	1,484,754	1,446,724
Education	1,011,228	1,006,037
Public Affairs	623,196	887,586
PPFA Dues	299,948	291,808
Total	\$ 29,479,087	\$ 28,325,004

EXPENSES



FY14 Net Surplus \$2,825,345

FY14 Operating Surplus \$130,379¹

ASSETS

Long Term	14,748,748	13,890,431
Current	19,061,814	17,320,202
Liabilities	2,721,255	2,946,671
Total Net Assets	\$31,089,307	\$28,263,962

1. Operating surplus excludes bequests and campaign gifts not available for operations.

BOLD & NEW

PLANNED PARENTHOOD IS BRAVE, INNOVATIVE

Your support has allowed PPSNE to be fearless and to embark on exciting new ventures that have proven beneficial to our organization and especially to our community.



PPSNE moved two health centers into new locations this fiscal year in Manchester and Enfield, CT. Manchester opened its doors to patients on October 14, 2013, at 319 Main Street; Enfield opened its doors on March 24, 2014, at 111 Hazard Avenue. These new locations offer convenient free parking as well as walk-in and same-day appointments. PPSNE will continue to extend the same high-quality, affordable reproductive health care it provides to all of its patients in these new locations.



Manchester, CT



Enfield, CT



PPSNE held a unique and successful event in RI that honored the work of three remarkable men in our community who work to safeguard women's health. More than 150 friends, advocates and supporters attended "A Providence Affair: Men Who Champion Women's Health" on November 7, 2013 at the Roger Williams Park Casino in Providence. This fundraiser, honoring Congressman David N. Cicilline, Dr. Pablo Rodriguez (pictured far left), and Donald Weinberg (pictured far right), raised more than \$93,000.



Providence, RI



In May 2014, PPSNE launched a new marketing campaign, "Facts," developed in partnership with Planned Parenthood of Minnesota, North Dakota, South Dakota and Tait Subler, a strategic consultancy firm, in order to better differentiate Planned Parenthood as a health care provider. The Facts Campaign highlights the number of times Planned Parenthood provided particular services across the country and then encourages readers to "Get to Know Planned Parenthood; Where Your Voice Gets Stronger by the Numbers." For the past three years, PPSNE has invested in market research to learn more about our patients. From focus groups to online surveys, we were able to tap into genuine, authentic feedback.



New Haven, CT



Hartford, CT



Providence, RI

This comprehensive branding campaign includes radio advertising, digital and vinyl billboards, metro bus signage, bus shelter signage, building signage, banners, social media, and online advertising on sites such as Pandora and Google.

LOOKING AHEAD

In June 2015, PPSNE will celebrate the past, acknowledge the present and look to the future when we commemorate the 50th Anniversary of *Griswold v. Connecticut*. In 1965, the leaders of (then) Planned Parenthood League of Connecticut put their lives on the line to provide the community with what was considered "illegal contraception" and were arrested. Although the Connecticut court upheld the conviction, Estelle Griswold, the executive director of Planned Parenthood League of Connecticut, and C. Lee Buxton, doctor and professor at Yale Medical School appealed to the U.S. Supreme Court, which reviewed and decided the case in 1965. This ground-breaking decision set a precedent and contributed to the success of *Roe v. Wade*.

This success will not be forgotten. Remembering how we won that fight empowers PPSNE to continue the fight with hope and high expectations. Fifty years later, women are still fighting for birth control, and it is exciting to see our young people taking on this fight. Stay tuned for events next spring celebrating this critical decision.

DONORS

2013-2014 FINANCIAL REPORT

It is with our deepest thanks that PPSNE recognizes and honors the individuals and organizations who made a difference last year in the lives of Connecticut and Rhode Island women, men and teens by financially supporting our work. Gifts of every amount are critical to our efforts and are greatly appreciated.

Due to space limitations we are only able to list donors' highest contribution level between January 1, 2013 and March 31, 2014 (greater than \$1,000). If we have misspelled your name, or made an error in your listing, please let us know by contacting the Development Office at (203) 752-2804. We are grateful for the opportunity to correct our records and offer our apologies.

INDIVIDUAL SUPPORTERS

The following people have made significant personal commitments to Planned Parenthood of Southern New England and are members of the President's Circle. Through their very generous financial support, they are essential partners in our work. Their exemplary dedication maintains the financial viability of PPSNE.

CHAMPION (\$50,000+)

Anonymous (2)
Ms. Leslie S. Bhutani Δ
and Mr. Ashish Bhutani
Betsy and Jesse Fink

Sue Hessel ◇ and Karen Dahle
Ms. Esther Maura
Mr. and Mrs. Garrett Moran
Linda Δ and David Roth

Skip and Jo Sly
Mrs. Joan Tweedy

TRAILBLAZER (\$25,000 – 49,999)

Anonymous (2)
Nancy and James Better
Ms. Elizabeth Chace
Ms. Mary Corson
and Mr. Jonathan D. Sackler
Mr. and Mrs. Joel E. Freedman
Patricia Fuller Δ and Thomas Oakes
Mr. Alan G. Hassenfeld
and Ms. Vivien Hassenfeld

Ms. Ellen B. Lubell ◇
and Mr. Leslie Byelas
Louie Maura
Ms. Karen Lee Pritzker
and Mr. Michael Vlock
Mr. Robert Schiro and Mrs. Dorene Schiro
Mr. Henry D. Sharpe, Jr.
and Mrs. Peggy Sharpe

Mrs. Ginny Soutter Δ
and Mr. Thomas Soutter +*
Ms. Sandra G. Wagenfeld Δ
Mrs. James P. Warburg
Karen Δ and William Watt

+ Deceased

◇ Board member

Δ Former Board member

Staff member

20 year donor at the \$1,000+ level

"My tenure and service on Planned Parenthood's Board of Directors was one of the most important and dynamic periods of work, service, and advocacy in my life. Planned Parenthood has been and continues to be at the vanguard of protecting women's health. The organization is an important voice for women when they are unable to speak or advocate for themselves."

Amos Smith – Bloomfield, CT



"For many years we have contributed to Planned Parenthood for the simple reason that all women need and deserve comprehensive reproductive health services. Recently we took a new step and committed to a monthly contribution to Planned Parenthood."

The Rev. John and Susan Weston – Providence, RI



PACESETTER (\$10,000 – 24,999)

Anonymous (6)
 Mr. and Mrs. Robert P. Anderson, Jr.
 Ms. Dede Bartlett and Mr. James W. Bartlett
 Mark and Debby Blackman
 Senator Richard Blumenthal and
 Mrs. Cynthia Blumenthal
 Ms. Leigh A. Bonney ♦ and
 Dr. Larry Ritzhaupt
 George T. Boyer and Francele Boyer +
 Ms. Mary D. Byron
 Ms. Lisa Cohn and Mr. Gary Cohn
 Mrs. Anne M. Cross
Mrs. Norman Fain
 Brooke A. Feder and Jesse Stuart
 Ms. Deborah J. Freedman Δ and
 Mr. Ben A. Ledbetter, Jr.

Mr. Larry Goldstein and Ms. Jill Goldstein
Merle and Stanley Goldstein
Mr. William C. Graustein
 Susan and David Haffenreffer
 Mrs. Jocelin Hamblett Δ
Dr. Nancy J. Hutson Δ and
Mr. Ian Williams
 C. Peter Jencks
Mrs. Martha S. Joukowsky Δ and
Mr. Artemis A.W. Joukowsky
 Kimball Robbins and Jason Kemp
 Mr. and Mrs. Robert Marks
 Mrs. Ellen W. McBride, Esq.
 Ms. Sheila Mossman
Ms. Emily B. Nissley
 Mrs. Stefanie R. Offit and Mr. Daniel W. Offit

Mrs. Joan W. Rhame, Jr.
 Ms. Ellen J. Schapps Richman Δ
 and Mr. Richard P. Richman
Ms. Marcia Riesman
 Mr. and Mrs. Avery Rockefeller III
Mrs. Elizabeth S. Russell
 and Mr. Peter G. Russell +
Rosalyn K. Sinclair
 Ms. Callie Sullivan
 Judy # and Scott Tabar
 Mr. Fred and Mrs. Joan Weisman
Hon. Myrth York and Mr. David Green

GROUNDBREAKER (\$5,000 – 9,999)

Anonymous (4)
 Mrs. Millicent S. Armstrong
 Dr. Bridget Blevins Baird ♦
 Ms. Rosanne S. Berman
 and Mr. Daniel S. Wichman
 Ms. Laura F. Booth
 Ms. Cathy Browning Burch
 Ms. Eunice Burnett and Mr. Rob Burnett
Ms. Letitia Carter Δ
and Mr. John S. Carter
 Mr. William Cary
 Ms. Siw de Gysser ♦
 Ms. Thea Duell
 Danielle and Evan Eason
Barbara T. Ellinghaus Δ
 Sheree & Jerry Friedman
 Linda and David Glickstein
 Nicole P. Heath
 Ms. Barbara Heffernan
Mrs. Louise S. Hoffman
 Dr. Arthur Hurvitz and Ms. Joyce Hurvitz

Mr. Jonathan E. Ingersoll, Jr.
and Mrs. Claire S. Ingersoll
Ms. Anne Jencks
 Simone P. Joyaux, ACFRE ♦
 and Tom Ahern
 Eric Lindquist
 Ms. Meghan K. Lowney
Mrs. Peter Malkin
 Ms. M.J. Matera
 and Mr. James C. Meehan
 Mr. John W. Moffly IV
 and Mrs. Donna C. Moffly ♦
Mrs. Susan Elizabeth Ness
and Mr. Philip W. Ness, Jr. Δ
 Mr. Victor Oristano
 Mrs. Kate F. Osman
 and Mr. Bart David Osman
 Mrs. Cynthia Patterson
 Mrs. Nina Pratt
 Dr. Carole M. Presnick

Ms. Vickie Riccardo
 Ms. Susan M. Ross ♦
 and Dr. Charles F. MacCormack
 Ms. Jean Schiro-Zavela
 and Mr. Vance Zavela
 Andrew D. Siegel and Tracy Nashel
 Ms. Barrie Silverman
 and Mr. Jonathan Torop
Ms. Lisa Garratt Stuart Δ
and Mr. Scott M. Stuart
 Susan and John Tremaine
 Ms. Cary Twichell
 Lynn and Charles Weiner
 Mrs. Jane G. Weitzman
 and Mr. Stuart Weitzman
 Ms. Carolyn Wiener
Don E. Wineberg, Esq. Δ
and Mrs. Kitty Wineberg
 Mrs. Martha R. Zoubek
 and Mr. Charles L. Zoubek

+ Deceased

♦ Board member

Δ Former Board member

Staff member

20 year donor at the \$1,000+ level



"Fran and I have been strong supporters of the mission of Planned Parenthood for over six decades. We believed in the right for all women to access quality health care and reproductive rights. Sadly, Fran died in September of 2013. In her will, she made two generous Planned Parenthood bequests, one to the New Jersey affiliate and the other to Southern New England. I plan to continue supporting this worthwhile mission in loving memory of my Fran."

George T. Boyer – Jamestown, RI

Fran Boyer pictured left

ppsne.org 15

LEADER (\$2,500 – 4,999)

Anonymous (6)
 Ms. Lucy Ambach
 Ms. Belinda Badcock
 Mary Bawza #
Mrs. Shirley C. Beal
 Christopher Bellis #
 and Eddie Bennett
 Ms. Lisa G. Bisaccia
 Mr. Philip H. Bolton
Mr. Ruud Bosman
and Ms. Laurie Bosman
Nancy F. Braitmayer
 Erica ◇ and Matt Buchsbaum
 Jenny Carrillo, PhD Δ#
 Mr. and Mrs. Nathan W.
 Chace, Esq.
 Mrs. Gay Coe
 and Mr. John T. Coe
 Drew S. Days
 and Ann R. Langdon
 Mr. and Ms. Guillaume De Ramel
 Mrs. Amy C. Denton
 and Mr. James T. Denton
 Mr. Patrick Dolan
 and Ms. Marie D. Dolan
 Mrs. Sophie Dowling
 Lauren Driscoll
Barbara and Fred Edelstein
Ms. Phoebe L. Erdman Δ and
Mr. John H. Erdman, Jr.
 Mr. Jonathan Fain
 and Ms. Ruth Fain

Dr. Edwin G. Fischer
and Ms. Angela Fischer
 Mr. Richard K. Freedman
 and Ms. Nancy S. Freedman
 Valerie Friedman
 Ms. Lisa Getson
 Ms. Sallie Gouverneur
 Ms. Eliza C. Harrison
 Ms. Laurie Haydu #
Donald and Diane Hewat
 Helene and Don Hirschfeld
 Ms. Patricia Jay
 and Mr. Richard Jay
Mrs. Penelope D.
Johnston-Foote
 Mr. Andrew Kail
John Katz
 Ms. Ellen Keats
 Mrs. Patricia F. Kemp
 and Mr. Lawrence Kemp
 Mrs. Marie-France Kern
 Barry Kramer Δ
 and Donna W. Zalichin
 Ms. Karen M. Krupnik
 Mr. and Mrs. Richard S.
 Lannamann
 Ms. Sally E. Lapides
 and Mr. Arthur P. Solomon
 Ms. Marta Jo Lawrence
 Dr. Cathy Lund
 and Mr. Peter Karczmar
 Ms. Nancy Markham

Mr. Richard L. Matthies
 Sandy and Tom McGee
 Ms. Christina W. McIntyre
 and Mr. Jerry McIntyre
 Mr. Sanjeev Mehra
 and Mrs. Karen
 Peterson Mehra
Alice P. Melly
 Ms. Barbara Duberstein Messer
 Brian and Heidi Miller
Rebecca Minard Δ
and Max Kohlenberg
 Dr. John Rollin Morton ◇
 Ms. Susan Mufson
 Dr. Robert P. Naparstek M.D.
 and Ms. Lisa G. Bisaccia
 Ms. Terry Newman
 and Mr. David B. Rubin
Ms. Margaret S. Patricelli Δ
and Mr. Robert E. Patricelli
 Ms. Susan Penry-Williams
 Ms. Gina Pate Pierce
 and Mr. Stephen Pierce
 Mr. Alvin S. Prusoff
 and Dr. Deborah A. Derose
 Ms. Amelia Renkert-Thomas ◇
 Mr. Maurice Reznik
 and Mrs. Joanie Reznik
Mrs. Nancy Rosen Δ
and Mr. Robert J. Rosen
 Mrs. Deborah Royce
 and Mr. Charles Royce

Mr. Robert Scheuer
 Mr. Jay Schiavone
 Ms. Wendy Schreiber
 Ms. Nancie K. Schwarzman
 and Mr. Mark Schwarzman
 Ms. Catherine Seasonwein
 Julie and Henry Sharpe
Mrs. Jane Sherman Δ
and Mr. Deming Sherman
 Robert and Virginia Shiller
 Ms. Allison D. Silverman
 Dr. Nancy L. Stanwood #
 Dr. Alan L. Stern
 and Cyndi Billian Stern
 Ms. Carolyn Surgent
 Ms. Karen Taggart
 and Mr. Dick Taggart
 Mr. Marc VanVooren
 and Mrs. Elinor VanVooren
 Ms. Anne Walsh
 Kristin Westfall
Mr. Frederick W. Whitridge, Jr.
and Mrs. Serena Whitridge
Stephen A. and Abby Wise
 Ms. Mary Kay Woods Δ
 Ms. Constance Worthington Δ
 and Mr. Terry Tullis
 Marjorie Wren #
Prof. Robert J. Wyman Δ

ADVOCATE (\$1,000 – 2,499)

Anonymous (15)
 Representative Edith Ajello
 Mr. Jack Alexander
Rev. Dr. David Ames Δ
and Dr. Carol Landau
Mrs. Nancy Angier Δ
 Ms. Peri Ann Aptaker
 Mrs. Nancy Armstrong
 and Mr. Tim Armstrong
 Ms. Jennifer Ash
 Ms. Susan Bahr
 Ms. Carol Bailey

Ms. Pauline Bailey
 Ms. Sue H. Baker
 Ms. Jennifer A. Baldock
 and Mr. Michael S. Baldock
 Kaye and James Barker
 Ms. Sara A. Bassler
 and Mr. John P. Bassler
 Mrs. Lauren Berkley Saunders
 Ms. Eryn Ament Bingle
 Mrs. Freya Block
 and Mr. Richard H. Block
 Ms. Helen Buchanan

Iris and Paul Busch
 Ms. Blanche M. Capilos Δ
 and Mr. David Biklen
 Ms. Gayle L. Capozzalo ◇
 Ms. Karen L. Carter
 Ms. Christine Chao
 and Mr. James Shaver
 Dr. Joseph Chazan
 M. Jane Christensen
 Dr. Vidal S. Clay
 Richard and Carol Cohn
 Ms. Phoebe Coleman

Ms. Sarah Conyngham
 Linda # and Fred Cote
 Tim and Carol Covello
 Dr. Wear Culvahouse
Yvonne Dadoo de Lewis
 Sylvia B. Dahl
 Ms. Alicia Dana
 Ms. Christine DiModica
 Jean DiNatale
 Mr. and Mrs. Robert Dodge
 Ms. Donna K. Donaghy
 Ms. Carole Donenfeld

+ Deceased

◇ Board member

Δ Former Board member

Staff member

20 year donor at the \$1,000+ level

“It’s becoming more and more clear that women can never assume that our reproductive rights are inalienable. When we are complacent, we run the risk of losing control of our medical care options, and that is simply not acceptable. I am enormously grateful that Planned Parenthood gives us an organized voice and a strong and consistent advocacy platform. They have made equal rights and access to healthcare a reality for all women—their good works support us and help keep us safe.”

Dr. Cathy Lund and Dr. Peter Karczmar – Providence, RI



"I support Planned Parenthood because they supported me. As a freelance artist, for many years I was unable to afford health insurance. As a result of their sliding scale policies, the doctors and nurse practitioners at Planned Parenthood were often the only healthcare I received. Because of Planned Parenthood, I was able to make educated choices about my body. I believe that every person has the right to make their own decisions about their well-being and I will continue to support Planned Parenthood and their efforts to ensure that everyone has the access to the healthcare they need and deserve."

Lori-Beth Muñoz – Bloomfield, CT



Mr. and Mrs. Robert D. Duke
Cheryl and Dan Dunson
Ms. Kathryn Dutton
Eileen and Andrew Eder
R. Kemerer Edwards
Ann R. Elliman
Mr. John Ewing
and Mrs. Janice Ewing
Ms. Joy K. Fausey
Mr. Noel M. Field, Jr.
and Ms. Phyllis Field
Dr. Emily A. Fine Δ
and Dr. Stephen A. Stein
Mr. and Mrs. Karl Fleischmann
Linda A. Forrester Δ
Mr. and Mrs. Jonathan Fox
Tommy B. Fox Δ
Karen Boeckmann Freedman
Mr. Allan L. Frew Δ
Mr. Howard A. Fromson
Ms. Susan M. Gallucci-Bellamy
Ms. Lucy Gelb
and Mr. Frank Sisto
Christiana N. Gianopulos Δ
Ms. Constance Gibb
Ms. Coleen Glessner
Mrs. Diana Romney Gray
and Mr. William Gray
Mr. Richard Grellier
and Ms. Alison Cox
Ms. Alexis Hafken
Ms. Martha Hamblett
Dr. Rachel Harrigan
and Dr. Edmund P. Harrigan
Ms. Elizabeth A. Hassinger
Ms. Janet Hatton
and Mr. Charlie Hatton
Kathleen Hayes, APRN
and Dr. Steve Updegrove
Sandra R. Herman
Mr. David Hibbitt
and Mrs. Susan Hibbitt
Ms. Schuyler Hinnant
and Mr. Charles Hinnant
Mary Ann
and Norman Hoberman
Ms. Marcia Hoffer Δ
Ms. Michelle Hoffnung

Dr. Peter Hollmann
and Mrs. Vicky Hollmann
Ms. Leslie Hotary
Ms. Cheryl Howard
Roger G. Ibbotson
and Jody L. Sindelar
Ms. Debra Herman James
Mr. John Jessop #
Ms. Suzanne C. Joffray
and Mr. Donald M. Joffray
Diana Δ and Duncan Johnson
Scott Johnson
Myra L. Johnson
Dr. Joel Kabak
and Dr. Judith R. Jaeger
Ms. Helen B. Kaplan
Ms. Ellen Kasle Δ
and Mr. Jeffrey Kasle
Ms. Sara B. Keller
Pat and Phil Kemp
Mr. and Mrs. Donald M. Kendall
Mr. Robert D. Kilmarx
Gretchen and Charlie Kingsley
Mr. David W. Knapp
Mr. Clinton D. Kornegay
and Ms. Rosalind Kornegay
Eileen and Hal Kraus
Ms. Linda Kushner
and Mr. Harold Kushner
Ruth Lambert
and Henry S. Harrison
Mr. Arthur Landy
and Mrs. Eva Landy
Mrs. Cornelia Lanou
Mr. and Mrs. Howard Lasser Δ
Ms. Debby Leach Δ
and Mr. Edwin F. Leach
Ms. Margaret Lee
Mr. W. Harmon Leete
and Mrs. Elizabeth Leete
Sara and Kingsley Leighton
Mr. Todd Lewis
Dr. and Mrs. William A. Lieber Δ
Ms. Karen Lieberman-Daly
and Mr. T. Edmund Daly
Ms. Susan Liebert

Ms. Lindy Lilien
Dr. Richard B. Lipton
and Ms. Amy N. Lipton
Ms. Patricia P. Livingston
and Mr. Thomas S. Gottsleben
Ms. Olga Mack
Ms. Alexa Maddock
Mrs. Ann Mandel
Mrs. Judy Mann
and Mr. Robbie Mann
Ms. Carolyn Mark
Ms. Susann Mark ◇
Kay J. Maxwell Δ
Charisse Δ and David Mayer
Robert and Carolyn Mattoon
Dr. and Mrs. S. W. McCalley
Drs. Christopher
and Susan McCawley
Mr. Norman McCulloch, Jr.
and Ms. Dorothy McCulloch
Rose McIlvane #
Miss Teresa McShane
Mellen Foundation, Inc.
Josephine Merck
Mrs. Susan Meyers
and Mr. Glenn Meyers
Ms. Anne R. Moller
Ms. Marta E. Moret Δ
and Mr. Peter Salovey
Ms. Samantha Moro
Mr. William F. Morrill
and Mrs. Mary Sue Morrill
Mrs. Mary Katharine B. Mountcastle
Mrs. Sandy Mulligan
Ms. Emma Jean A. Musto
Jeanne B. Musto
Dr. and Mrs. Arnold D. Newman
Ms. Jill Oberlander
Ms. Janet M. Offensend
and Mr. David G. Offensend
Ms. Patricia Ohnell
Ms. Christy B. Olson
Ms. Harley Osman
and Mr. Stephen Osman
Ms. Mairead O'Sullivan

Ms. Nancy J. Parmet Cook
Mrs. Lynne L. Pascualano
and Mr. Richard J. Pascualano
Ms. Mason Perkins
Ms. Lori Petchers
and Mr. Neil Petchers
Dr. Laura Philips
Mrs. Suzanne Pleskunas
and Mr. Peter Pleskunas
Ms. Nancy R. Posel
Ms. Letitia Potter
Ms. Romana Primus
Ms. Stephanie Raia
and Mr. Peter J. Appleby
Mrs. Karen Richard
Mrs. Angenette N. Robinson
Dr. Ellen J. Robinson
and Mr. James P. Condren
Mrs. Linda Rockwell
and Bishop Hays Rockwell
Dr. Pablo Rodriguez
and Mrs. Diane Rodriguez
Dr. and Mrs. Gilbert J. Rose
Mrs. Fran W. Rosenfeld
and Mr. Eric Rosenfeld
Ms. Carol F. Ross
and Mr. Stephen A. Ross
Kafi Brazilia Rouse #
Karen Royce
Ms. Sarah Russell
and Mr. Lance Elwell
Ms. Ann Sagalyn
Mrs. Sally Schenk
and Mr. Everett Schenk
Mr. Robert Scholes Δ
and **Mrs. Jo-Ann Putnam-Scholes**
Mr. Walter Sedgwick
Ms. Valerie Seiling Jacobs Δ
and Mr. Mark Jacobs
Mrs. Leslie Setterholm Curtis
and Mr. Timothy T. Curtis
Jean and Jeffery Shaw
Ms. Merrill Sherman
Ms. Debra Shore
and Mr. Marc Shore
Mrs. Alice Siegel Δ
Ms. Pierrette C. Silverman #

"I think Planned Parenthood fills a significant gap for people who don't have many resources easily accessible to them. There's definitely a need for the work that Planned Parenthood does including outreach and education. It's been proven over and over again in the research that society gets better when you take care of women's health because women take care of everybody else."

Dr. Bindu Vanapalli – New Haven, CT



Mrs. Barbara Slaight
and Mr. Tom Slaight
Ms. Catherine Smith
Heidi B. Smith
and Scott M. Smith
Marie Noelle Smith
Ms. Barbara Sokoloff
and Dr. Herbert Rakatansky
Mrs. Lois Sontag
Elie Spiesel and Joann Gaughran
Drs. Emily and Timothy # Spurrell
Ms. Kristine Stahly
Mr. Barry S. Sternlicht
and Mrs. Miriam Sternlicht
Dr. Virginia M. Stuermer

Mr. Shivan Subramaniam
and Mrs. Jyothi Subramaniam
Ms. Charlotte T. Suhler
and Mr. John S. Suhler
Ms. Andrea Sullivan
Ms. Joan M. Thakor
June M. Thomas
Ms. Christine Toback
Ms. Gail Tomberg
Beth and Steve Treadway
Paul and Beverly Truebig
**Mrs. Toddy Torrance
Turrentine Δ and Mr.
Thomas Turrentine**

Mr. Cheever Tyler
and Mrs. Sally Tyler
Dr. Augustus K. Uht
and Ms. Laurette Bradley
Mr. Fahd Vahidy ◇
Dr. Bindu Vanapalli
Mr. David Venables
Mr. and Mrs. William Warren
Emily Aber and Robert Wechsler
Ms. Cathy Weinberg +
Mrs. Jill Weiner
and Mr. Jonathan Weiner
Ms. Naida Weisberg
and Mr. Alfred Weisberg

Abby N. Wells
Ms. Sherry Wernicke
Ms. Charlotte Westerfield
Hon. Terrie E. Wood
and Mr. John F. Wood
Ms. Katharine C. Worden
Mr. Peter Wright
and Ms. Wendy Wright
Susan Lloyd Yolen #
Ms. Laura Yung
Dr. Stanley Zimmering
Toots Zynsky

ESTATES AND TRUSTS

Planned Parenthood of Southern New England received generous support from the following estates and trusts last year.

Alice G. Slade Charitable Unitrust
Estate of Nancy W. Brundage
George H. Gilman Trust
Estate of Esther B. Goodwin
Josephine H. Holcombe Irrevocable Trust
Marion and Ellsworth Grant Fund
Marion H. Chaffee Fund #1 at the
Hartford Foundation for Public Giving

R. T. Vanderbilt Trust
The Rose and Aaron Roitman Fund
The Sara B. Wardell Charitable Lead Annuity Trust
William P. Haas Fund at the Hartford Foundation
for Public Giving
Estate of Estelle I. Zahn
Estate of Jean H. Winchell

IN-KIND DONORS

Cranmore Inn (North Conway, NH)
Ms. Ann Gralnek
Hassenfeld Family Initiatives LLC
HMSDesign
Sue Hessel ◇ and Karen Dahle
Simone P. Joyaux, ACFRE ◇ and Tom Ahern

Yvonne Dadoo de Lewis
Madden's Gastropub
Moffly Media
Phoenix Press
WomanCare Global

+ Deceased

◇ Board member

Δ Former Board member

Staff member

20 year donor at the \$1,000+ level

HEPBURN POTTER LEGACY SOCIETY

The following individuals have left a legacy for reproductive health and justice by including Planned Parenthood of Southern New England in their life or estate plans.

Susan Silliman Addiss Δ
Dorothea S. Agnew +
Anonymous (6)
Ira and Karen Asher
Henry and Nancy Bartels
Judith K. Beard Δ
Robert G. Bennett +
Kay V. Bergin +
Leslie S. Bhutani Δ
Nicole Biceglia
F. Vining Bigelow
Linda E. Bireley
Virginia B. Birkby +
Francele F. Boyer +
Nancy W. Brundage +
Elizabeth H. Carabillo
Laura B. Clementsen +
Nancy W. Collins +
Sean C. Connor Δ
and Anne Connor
Scott Corbett +
Linda Cremin
Margaret W. Cross +
Rebecca Manning Cutler +
Bob Donnalley
Jane Dyer
Elizabeth Edelmuth +
Ruth F. Effron
Barbara T. Ellinghaus Δ
Marguerite Eric +
Mary Lee Farrell Δ
Russell Field

Elizabeth W. Fischer
C. Coleman +
and Mary B. Fisher +
Muriel Fleischmann
Fay S. Fletcher +
Jennifer G. Frank
Gertrude K. Franzl +
Valerie Friedman
Patricia L. Frost +
Patricia Fuller Δ
Patricia B. Gilbert
Milton S. Godfried +Δ
Esther Goodwin +Δ
and Richard Goodwin +
Ellsworth Grant +
and Marion Hepburn Grant +
Lynn M. Gunzberg +
William P. Haas +
Margaret H. Hanson +
Nora Harris
Eleanor A. Harvey +Δ
Jane Wynn Hay +
Helen Davis Hermes +Δ
Robert P. Herzog +
Sue Hessel Δ and Karen Dahle
Josephine H. Holcombe +
Sandra Hoover
Donald F. Hubert +
Arthur Hurvitz and Joyce Hurvitz
Nancy J. Hutson Δ
Cornelia D. Jahncke +Δ
C. Peter Jencks

Simone P. Joyaux ◇, ACFRE
and Tom Ahern
Brian Kellow
Dr. Walter W. Kemp +
Charles L. Kerstein
Dorothy S. King +
Jessie and Jim Δ Kingston
Holly Kuhne
Barry Lastra
and Alison Coolbrith
Thelma J. Levin +
Dr. Michael B. Macko +
Jeremy Main
Patricia H. Main +
Susann Mark ◇
Loulie Mauran
Stuart & Susan McCalley
Rose McIlvane #
Margery Meyer
Edwina S. Millington Δ
Dorothy Mills
Rebecca Minard Δ
and Max Kohlenberg
Donna C. Moffly ◇
Philip W. Ness, Jr. Δ
Sheri and Richard Pascal
Carol M. Penta
Adeline H. Perkins +
Evelyn Peterson
Thomas Platt
Sidney S. Postol +
Donna-Jean Rainville

Catherine G. Roraback +
Rose and Aaron Roitman Fund
Deborah L. Ruggiero
Libby and Barry Schiller
Norma Jean Schmieding +
MaryAnn Scott
Joseph Sinclair +
Roselyn K. Sinclair
Alice G. Slade
Karen L. Spencer
Linda K. Stanich
Talcott Stanley +
Alison M. H. Stebbins +
Charles Sullivan +
Judy Tabar #
Anne Taylor Δ
Lucie N. Torrance
Toddy Torrance Turrentine Δ
Delia Tyrwhitt
Joan Warburg
Doris E. Whitbeck +
Gina White
Jean H. Winchell +
Patricia Winer +
Andrew T. Wolfson +
Constance Worthington Δ
and Terry Tullis
Marjorie Wren #
Estelle I. Zahn +
Alice Zea +

+ Deceased

◇ Board member

Δ Former Board member

Staff member

20 year donor at the \$1,000+ level



"I got married in 1956 and nine years later, after *Griswold v. Connecticut*, we got the right to use contraceptives, and then 8 years later was *Roe v. Wade*. All that time, women were working and fighting. I've been fighting for this my whole life, so leaving a gift in my will is putting my money where my mouth has been my whole life. That seems like a very simple thing to me. If you believe in this cause, then this is something that you should think about doing."

Susan Silliman Addiss – Branford, CT

INSTITUTIONAL SUPPORTERS

The following organizations made significant contributions to support the work of Planned Parenthood of Southern New England for women's reproductive health last year.

FOUNDATIONS

VISIONARY (\$100,000+)

Anonymous

CHAMPION (\$50,000 – 99,999)

Anonymous

Beatrice Fox Auerbach Foundation Fund at the Hartford Foundation for Public Giving
The Chester Kitchings Family Foundation
Connecticut Health Foundation

James and Lydie Strobbridge Fund at the Connecticut Community Foundation
The Rhode Island Foundation
Sunnen Foundation
Tortuga Foundation

TRAILBLAZER (\$25,000 – 49,999)

Anne S. Richardson Fund

Carolyn Foundation

Educational Foundation of America
Frank Loomis Palmer Fund

Prince Charitable Trusts

Prospect Hill Foundation

S & L Marx Foundation

PACESETTER (\$10,000 – 24,999)

Anonymous

Anderson-Paffard Foundation

The Bydale Foundation

Cory & Bob Donnalley Charitable Foundation

Ensworth Charitable Foundation

Donor Advised Fund at the Fairfield County Community Foundation

Haffenreffer Family Fund

Island Foundation

National Institute for Reproductive Health

Near and Far Aid Association

Otto H. York Foundation

Owenoke Foundation

The Prentice Foundation

Connecticut Affiliate of the Susan G. Komen Breast Cancer Foundation

Windham Area Women & Girls Fund at the Community Foundation of Eastern Connecticut

The Women & Girls Fund - Southeast Area at the Community Foundation of Eastern Connecticut

20 year donor at the \$1,000+ level

"We are delighted to fund Planned Parenthood of Southern New England's health center for women and to support Students Teaching About Responsible Sexuality (STARS) program. All too often we view health care as a privilege rather than a basic human right, which it is. Planned

Parenthood provides women and girls with comprehensive and affordable access to health care. The STARS program achieves a very important goal of correctly informing young people about their sexual and reproductive health and rights."



Community Foundation
of Eastern Connecticut

Community Foundation of Eastern Connecticut – New London, CT

GROUNDBREAKER (\$5,000 – 9,999)

Women & Girls Fund of the Community Foundation for
Greater New Haven
Community Foundation of Eastern Connecticut
The Emily Hall Tremaine Foundation

Mary Dexter Chafee Fund
R. S. Gernon Trust
Universal Health Care Foundation of Connecticut
William and Alice Mortensen Foundation

LEADER (\$2,500 – 4,999)

Anna Fitch Ardenghi Trust
The Ayco Charitable Foundation
The Burroughs Fund
Frank B. Hazard General Charity Fund
George A. & Grace L. Long Foundation
Herbert E. and Daisy A. Stride Memorial Foundation

The John Merck Fund
Linford & Mildred White Charitable Fund
Lynn M. Gunzberg Fund at the Rhode Island Foundation
FJC
Sasco Foundation
Thomas J. Atkins Memorial Trust Fund

ADVOCATE (\$1,000 – 2,499)

Anonymous (2)
The Ayres Foundation
Crosswicks Foundation Ltd.

Helping Hand Foundation
The Ohnell Family Foundation
Ron and Cheryl Howard Family Foundation

CORPORATIONS

PACESETTER (\$10,000 – 24,999)

Goldman Sachs Gives
Pfizer Foundation

GROUNDBREAKER (\$5,000 – 9,999)

General Electric United Way Giving Campaign
HMSDesign

Pfizer Foundation
Pfizer United Way Campaign

LEADER (\$2,500 – 4,999)

Aetna Foundation
Agniel Commodities, LLC
Brenner, Saltzman & Wallman, LLP
Chace Ruttenberg & Freedman, LLP
GE Foundation
Goodcopy Printing & Graphics

McKesson Medical Surgical
Don and Helene Hirschfeld
Truist, Inc.: General Electric Co. • UPS
Johnson&Johnson • Cigna
Women's Health USA
Working Assets

ADVOCATE (\$1,000 – 2,499)

Bank of America United Way Campaign
Bristol-Myers Squibb Employee Giving Program
Coach Matching Gift Program
Decorative Crafts, Inc.
ExxonMobil Foundation, Inc.
High End Landscape LLC
Illinois Tool Works Foundation

John D. and Catherine T. MacArthur Foundation Matching
Gifts Program
Lindquist Insurance Associates, Inc.
Network for Good
The Prudential Foundation
Tug Hollow Corporation
United Technologies Employee Charitable Giving

OTHER ORGANIZATIONS

VISIONARY (\$100,000+)

Planned Parenthood Federation of America, Inc.

PACESETTER (\$10,000 – 24,999)

United Way of Central and Northeastern Connecticut

United Way of Rhode Island

United Way of RI- Philanthropy Account

Women's Health and Education Fund

GROUNDBREAKER (\$5,000 – 9,999)

Raising Women's Voices

Westport Country Playhouse, Inc.

LEADER (\$2,500 – 4,999)

Community Catalyst, Inc.

The Stamford Hospital

United Way of Greater New Haven

United Way of West Central Connecticut

ADVOCATE (\$1,000 – 2,499)

All Souls New London

Black Women's Health Imperative

Community Health Charities of America

Community Health Charities of

New England

Math for America

United Way of New York City

Women and Infants Hospital

The Women's Fellowship of the First Congregational
Church of Greenwich

Yale Graduate and Professional Student Senate

MATCHING GIFT ORGANIZATIONS

Aetna Matching Gift Program

Aon Foundation

AT&T United Way Employee Giving

Bank of America Matching Gifts Program

Bristol-Myers Squibb Employee Giving Program

CHA, LLC

Coach Matching Gift Program

Cornerstone Real Estate Advisers, LLC

Decorative Crafts, Inc.

ExxonMobil Foundation, Inc.

GE Foundation

Goldman Sachs Gives

IBM Employee Charitable Contributions Campaign

Illinois Tool Works Foundation

ING Employee Giving Campaign

John D. and Catherine T. MacArthur Foundation

Matching Gifts Program

Mead Witter Foundation, Inc.

Network for Good

Pepsico Foundation, Inc.

Pew Charitable Trusts

Pfizer Foundation

The Prudential Foundation

The Stanley Works Matching Gifts

Travelers Foundation

Truist, Inc. • General Electric Co. • UPS

Johnson&Johnson • Cigna

The United Illuminating Company

United Technologies Matching Gift Program

20 year donor at the \$1,000+ level

"Planned Parenthood is one of the 50 health charities of Community Health Charities of New England that does so much for the health and well-being of people throughout New England. It's wonderful that Planned Parenthood provides critical health services to families in need, often with no other place to turn."

Gary Kozak

Community Health Charities - Rocky Hill, CT

 **A Proud Member of**
Community
Health Charities®
New England
WORKING FOR A HEALTHY AMERICA



LEADERSHIP

PLANNED PARENTHOOD IS PEOPLE, JUST LIKE YOU

OFFICERS, 2013–2014

Amelia Renkert-Thomas, JD, *Chair*
Simone P. Joyaux, *Vice Chair*
Sandra Arnold, *Secretary*[^]
Siw de Gysser, *Treasurer*
Leigh Bonney, *Assistant Treasurer*

BOARD OF DIRECTORS, 2013–2014

Natalie Adsuar, MD
Adriana Arreola-Joseph
Erica Buchsbaum
Gayle Capozzalo
Karen Dubois-Walton, PhD
Sue Hessel[^]
Susann G. Mark
Nadesha Mijoba[^]
Donna Moffly
John R. Morton, MD
Susan Ross
Fahd Vahidy
Mary Kay Woods[^]

SENIOR MANAGEMENT

Judy Tabar, *President & CEO*
Mary Bawza, *Chief Operating Officer*
Christopher Bellis, *Vice President of Development*
Jenny Carrillo, PhD Δ, *Senior Vice President of External Affairs & Strategic Planning*
Linda Cote, *Chief Financial Officer*
John Jessop, *Vice President of Information Technology*
Pierrette C. Silverman, *Vice President of Education & Training*
Tyler Thorpe, *Vice President of People Development & Support*
Erika Ulanecki, *Director of the Office of the President*
Marjorie Wren, *Senior Director of Campaign & Major Gifts*
Susan Lloyd Yolen, *Vice President of Public Policy & Advocacy*

In June 2014, we welcomed Laurie Scott, Vice President of Development.

[^] Retired from Office or Board of Directors in May 2014.

In May 2014, we welcomed new members to the PPSNE Board of Directors:

Bridget Baird, Chris Corcoran, Holland Dunn and Frances Padilla.

PRESIDENT'S COUNCIL

Leslie S. Bhutani
Cynthia M. Blumenthal
Elizabeth Chace
Karen Dahle
Phoebe L. Erdman Δ
Rosalie Fain
Betsy Fink

Deborah J. Freedman Δ
Francine E. Goldstein
Vivien Hassenfeld
Sue Hessel
Marie-France Kern
Chester Kitchings
Ellen B. Lubell ◇

Loulie Mauran
Sheila Mossman
Cynthia Paterson
Sarah Richardson
Marcia Riesman
Linda H. Roth Δ
Nancie K. Schwarzman

Peggy Sharpe
Jo Sly
Sandra G. Wagenfeld Δ
Joan Warburg
Don E. Wineberg Δ

+ Deceased

◇ Board member

Δ Former Board member

Staff member

20 year donor at the \$1,000+ level

OUR MISSION, VISION & CORE VALUES

The mission of Planned Parenthood of Southern New England is to protect the fundamental right of all individuals to manage their own fertility and sexual health and to ensure access to the services, education and information to realize that right.

VISION: Together we will create a healthier generation and a more just society by putting sexuality education and sexual health care in the hands of young people—giving them the information and power they deserve to shape their future.

CORE VALUES:

- Integrity
- Partnership
- Quality
- Customer Service
- Communication

IS PLANNED PARENTHOOD

CONNECT WITH US



PresidentsCircle@ppsne.org • ppsne.org



Planned Parenthood of Southern New England

345 Whitney Avenue • New Haven, CT 06511 • 203.865.5158 | 111 Point Street • Providence, RI 02903 • 401.421.7820